



Montford Middle School

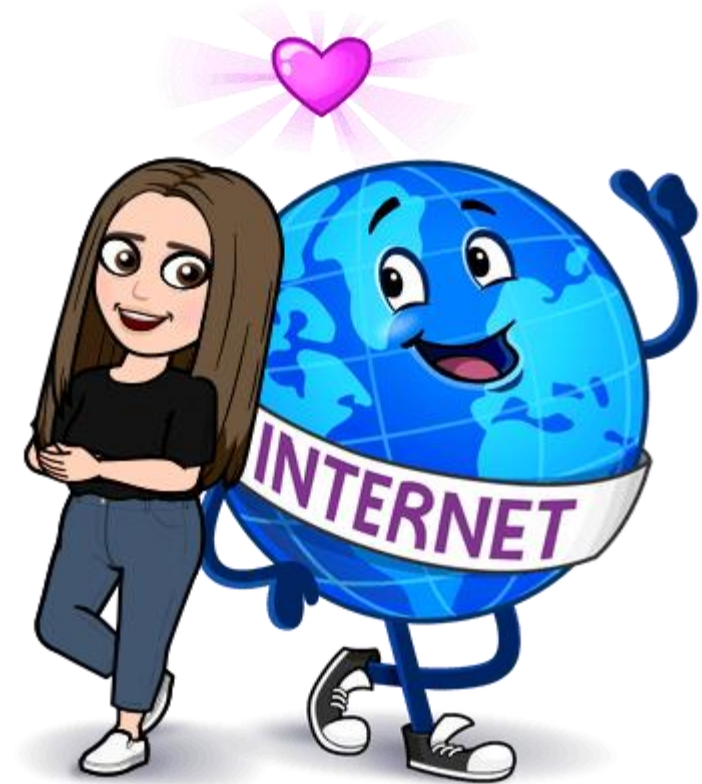
Important People to Know



- Lewis Blessing – Principal
- Rebecca Shultz – AP – Grades, Curriculum, Celebrations, ESE, Guidance, SEL
- Stacy Stallworth – AP – Discipline, Attendance, Transportation
- Dan Molinaro – Dean of Students (Referrals)
- Tiffany Ward – Testing Coordinator, 504 Coordinator, Academic Dean
- Susan Fowler – 6th/7th Guidance Counselor, SEL Coordinator, ESOL Coordinator
- Alexandra Long – 7th/8th Guidance counselor, ESE Coordinator
- Jennifer Day – Nurse
- Lori Hager – Registrar/Attendance
- Ricky Jugger – Cafeteria Manager
- Tracy Blomeley/Marty McDonald – Front Desk
- Deputy Halligan – School Resource Deputy
- Monica Scott – Activities Director
- Andrew Keltner – Technology Coordinator

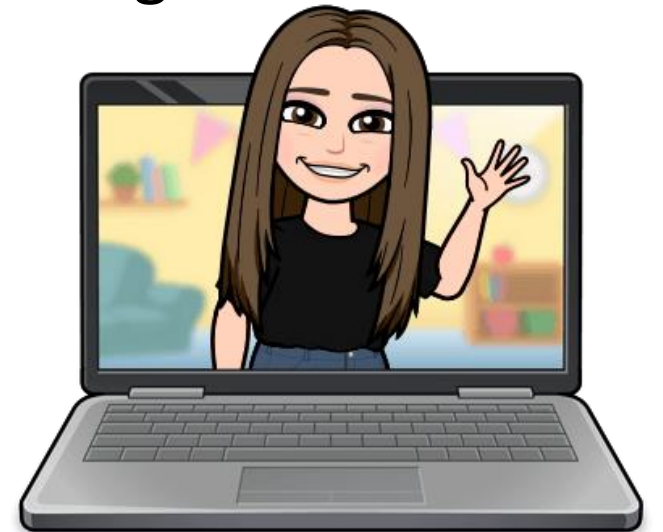
Our Website

- Landing Page
 - Important upcoming dates
 - Bigger things happen
- About Us
 - Important Docs
- Academics
 - Departments, Electives, Celebrations, etc
- Activities and Athletics
- Faculty and Staff



Technology

- Chromebooks – back and forth daily
- Canvas – Curriculum house (see website to add yourself as an observer next school year)
- FOCUS – Student information system, official grades, etc.
- Communication to teachers/faculty/staff should be through our email... NOT Canvas or FOCUS messages.



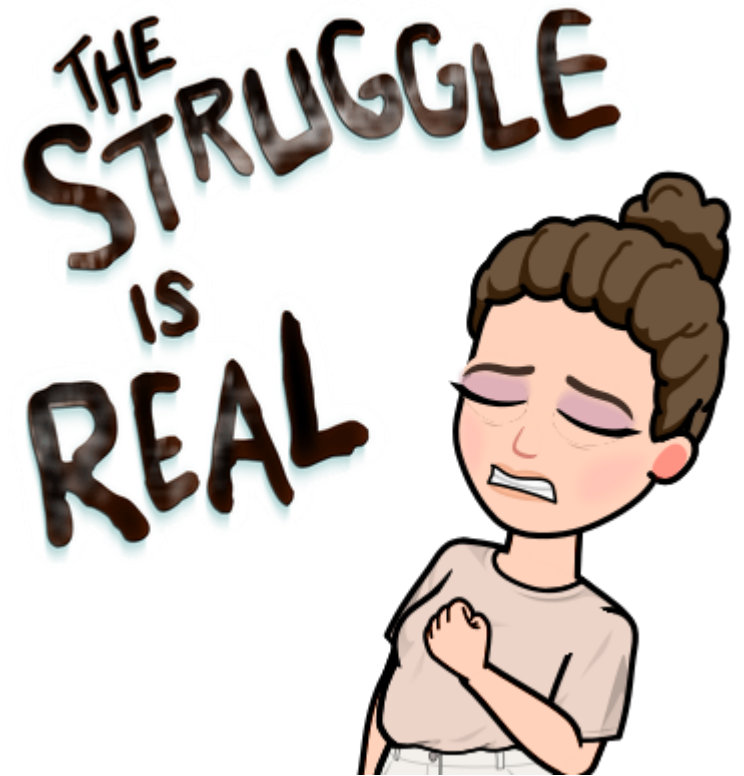
Tours

- Video Tour
 - <https://www.youtube.com/watch?v=Zs00wgVmb28&t=9s>
- First Tuesday of the Month
 - Contact Ms. Fowler fowlers@leonschools.net



HELP!

- Always start with a Parent Conference – scheduled through the Guidance office.
- Before school teacher help
- Mental Health Counselor – New Horizons
- MTSS Team



Making of a Mustang Summer Camp

- July 25th – July 28th
- 9am – 11:45am
- \$100 per child
- Contact Ms. Drew drewj3@leonschools.net
- See the campus before school starts, make new friends, meet teachers and staff, have some fun!

Attendance

- Email [MMS Attendance@leonschools.net](mailto:MMS_Attendance@leonschools.net) for attendance concerns or to get your absences excused.

Dismissal

- Does your student need to ride the bus home with a friend? Email Ms. Blomeley and Mr. McDonald at the front desk to get a bus pass.
- Car Riders – we do not check ID's or pick-up tags. We do not need to know if your student is riding home with someone different that day. Your student needs to know who is safe to go home with.

PTSO

- Contact Amy Mitchell, current PTSO President
- MONTFORDPTSO@gmail.com
- Volunteers
- Officer Positions



Treat Trolley

- Report Cards Celebrations
- Mighty Mustang
- Spirit Days



How do you get involved in Clubs or Sports?

- Sports – need a 2.0 GPA to play. You need to try out and make the team. There are announcements on the website, listserv, and on the school news when a sport is having try outs.
- Clubs – anyone can join a club! Just show up! They meet before school at 8:45am. Their meeting days are on the website and posted on the school news. If there is a club you would want to start that we don't already have, all you have to do is ask a teacher to sponsor it!
- You can join more than one sport or club at the same time.



State Testing

- ~~• FSA Writing (First week of April)~~
- ~~• FSA Reading~~
- ~~• FSA Math (or Algebra EOC/Geometry EOC based on course enrollment)~~
- ~~• Civics – 7th grade (or out-of-state 8th graders)~~
- ~~• Science – 8th grade only (or Bio EOC based on course enrollment)~~
- Progress Monitoring

Required Training

- Sexual Harassment
- Anti-Bullying
- Teen Dating
- Substance Abuse
- Human Growth and Development
- Human Trafficking
- Suicide Prevention
- **SEL Days** - Social and Mental Health (anxiety, depression, etc.)

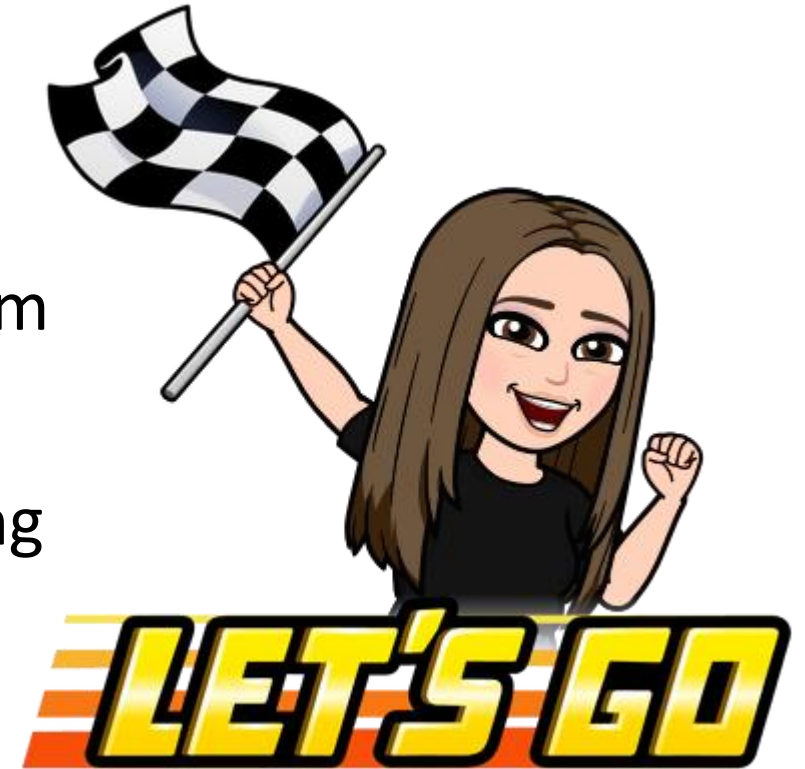
Promotion Requirements

- To get promoted out of middle school, your student needs to earn 3 credits in each of the four core classes (Math, Science, Language Arts & History).
- To earn a credit, you must earn a total of 4 quality points, and one point must be earned in the 3rd or 4th nine weeks.
 - A = 4 pts
 - B = 3 pts
 - C = 2 pts
 - D = 1 pt
 - F = 0 pts



How the Day Looks

- Supervision – 8:45am – 4:15pm
 - Before/After school program
- Late Bell Rings at 9:30am, dismissed at 3:50pm
- 6 classes, 5 minutes transition
- 25 minute lunch – based on 3rd period building
- Clubs/Practice are usually before school
- No Lockers
- PE has lockers to store items and has private stalls to dress out



Schedule

- 6 classes with 6 different teachers
- 4 classes are your core classes – Language Arts, Math, Science & History
- 3 Different Levels of core classes - General, Advanced or Gifted Classes – must be gifted to be in gifted classes
- High School credit Math and Science classes for 7th and 8th graders – do not need to be gifted to qualify
- 2 classes are electives – you can pick!
- One semester of PE is required, but you can take PE all year.
- Number ALL elective choices on your course request form.
- You do not always get your top choice!!
- Turning in your course request first, does not give you a better chance of getting your top electives.

Elective Choices

• 6th Grade Choices

- PE (one semester or all year)
- Art (one semester only)
- Spanish (one semester only- NOT HS credit)
- Chorus
- Band
- Orchestra
- Agriculture
- Yearbook (must apply – Ms. Bell bellj@leonschools.net)



Course Request Form

Number ALL choices #1 through #8. Your #1 option must come from the first row including PE.
Each option lasts the full school year.

PE Full Year

PE/Art

PE/Spanish

Art/Spanish

Chorus 1

Agriculture

Band 1

Orchestra 1

*You may include Yearbook as an option ONLY if you have applied with Ms. Bell Yearbook

Elective Choices

7th & 8th Grade Choices

- Chorus
- Orchestra
- Art
- Digital Tools
- Art for High School Credit
- Music Theatre for High School Credit
- Spanish 1 and 2 for High School Credit (you do not have to take the 6th grade Spanish to take Spanish 1 in 7th or 8th grade)
- Band
- Drama
- Adobe
- Yearbook



Requesting a Schedule Change

- Once schedules are finalized and you are contacted by the school, students and parents have until **August 19th** to request a schedule change for any reason. We do our best to accommodate your request but we may not be able to due to class size and limited availability.
- After **August 19th**, there will be no more schedule changes for the **entire school year!** Even when we get back from Winter Break.

